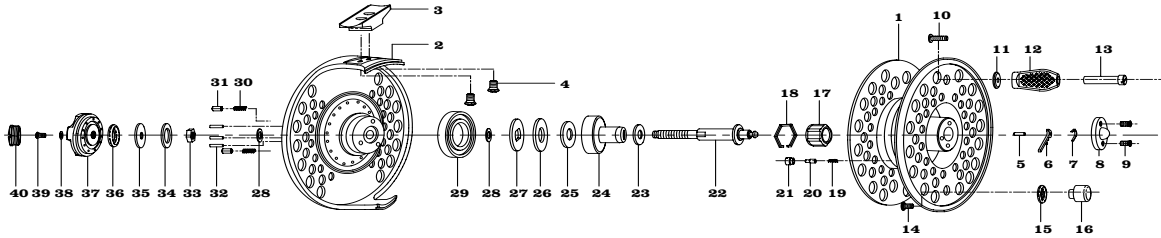


ORVIS®

ROD AND TACKLE

Battenkill Mid Arbor Reel



REEL ASSEMBLY

- | | | | |
|-------------------------|-----------------------|----------------------|-------------------------|
| 1 Spool | 11 Handle Collar | 21 Spool Click Nut | 31 Drag Click Pin |
| 2 Housing | 12 Handle Knob | 22 Main Shaft | 32 Drag Plate Pin |
| 3 Reel Foot | 13 Handle Rivet | 23 Disk Plate I | 33 Main Shaft Nut I |
| 4 Reel Foot Screw | 14 Balance Screw | 24 Sleeve | 34 Drag Rear Washer I |
| 5 Push Pin Head | 15 Balance O-Ring | 25 Disk Plate II | 35 Drag Rear Washer II |
| 6 Push Head | 16 Handle Balance | 26 Disk Plate III | 36 Drag Rear Washer III |
| 7 Push Head Spring | 17 One-Way Bearing | 27 Drag Plate | 37 Drag Knob |
| 8 Push Head Cover | 18 One-Way Retainer | 28 Guide Washer | 38 Drag Knob Lock W/S |
| 9 Push Head Cover Screw | 19 Spool Click Spring | 29 Ball Bearing | 39 Drag Knob Screw |
| 10 Handle Screw | 20 Spool Click Pin | 30 Drag Click Spring | 40 Drag Knob Cap |

BATTENKILL MID ARBOR REEL Capacity Chart

LINE WEIGHT	II	III	IV	V
WF3	150*			
WF4	125*			
WF5	100*	150*		
WF6		125*		
WF7		100*	150	
WF8			125	
WF9			100	125
WF10				100
WF11				75

Battenkill Mid Arbor Fly Reel Specifications

II Reel | weight: 5.5 oz. | 3 inches IV Reel | weight: 6.1 oz. | 3½ inches
 III Reel | weight: 5.7 oz. | 3¼ inches V Reel | weight: 6.5 oz. | 3¾ inches

Capacity in Yards

* Indicates 20-lb Dacron backing. All other capacities are quoted using 30-lb Dacron backing.

ORVIS®

ROD AND TACKLE

Battenkill Mid Arbor Reel

INTRODUCTION

Features of your Battenkill Mid Arbor reel include:

- Corrosion-proof machined anodized aluminum frame
- Center line drag with glass composite drag surface
- Easily interchangeable spool
- Left- to right-hand change, no tools required
- Corrosion-resistant stainless steel gearing

DRAG OPERATION

Battenkill Mid Arbor reels feature a dependable center line drag system.

To adjust the drag, turn the knob (figure 1) clockwise to increase resistance, and counter-clockwise to decrease it. The minimum drag setting should never be less than the pressure required to prevent over-running of the line on fast runs. Additional drag may be applied by palming the spool rim with your fingers or palm.

The easy drag adjustment is infinitely variable, providing wide-ranging and controllable settings.



FIGURE 1

SPOOL REMOVAL

The spool release is located in the middle of the reel spool (figure 2). To remove, depress the spool release latch while simultaneously lifting the spool out of the reel body.



FIGURE 2

RETRIEVAL CONVERSION

All Battenkill Mid Arbor reels have the drag factory installed for left-hand wind (figure 3).

To change your reel to right-hand wind, unclip the one-way clutch retainer (part #18) by squeezing the retaining tags. Remove one-way clutch bearing (part #17) and flip over so the plastic side is facing up. Replace clutch retainer.



FIGURE 3

ROUTINE MAINTENANCE

Your new Battenkill Mid Arbor reel has been properly lubricated prior to shipping. However, it should be cleaned and lubricated after extensive use or after contact with dirt or sand. Your reel should receive routine cleaning and maintenance at least twice each year. Lightly lubricate all moving components—handle, center spindle, and gear shaft with Penn Reel Lube, available in tackle shops. Do not put the reel away wet, or into a wet reel case or tackle box. For extended storage, remove both line and backing and loosen the drag.

GUARANTEE

Your reel is unconditionally guaranteed against defects in materials and workmanship.

If you have any problems, simply send your reel and a \$10 check to the following address:

By USPS Mail: Orvis; Overhaul Services; 178 Conservation Way; Sunderland, VT 05250.

By FedEx or UPS: Orvis; Overhaul Services; 4182 Main St.; Manchester, VT 05254.

If the reel is in any way defective in materials or workmanship, your \$10 repair check will be returned to you at once.

Your reel will be completely serviced (cleaned, lubricated, and returned to you postpaid) for a fee of \$10, plus cost of parts.

Damaged reels can be repaired on an individual basis and repair work will be billed at the hourly shop rate, plus parts. We will provide a written estimate upon receipt of the reel prior to any work being done.

QUESTIONS?

If you have any questions about the operation and maintenance of your new reel, Orvis Technical Advisors are always available.

Email: info@orvis.com. Phone: 1-800-778-4778.